



14c Liverpool Road, Preston, PR1 0AD

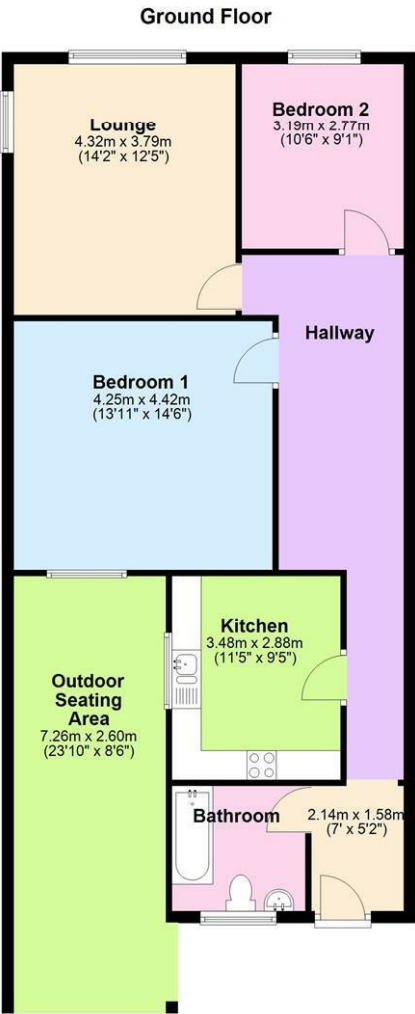
£160,000

Situated in the heart of Penwortham, this spacious 2-bedroom flat offers comfortable living with unbeatable convenience just steps from Liverpool Road's popular shops and cafés.

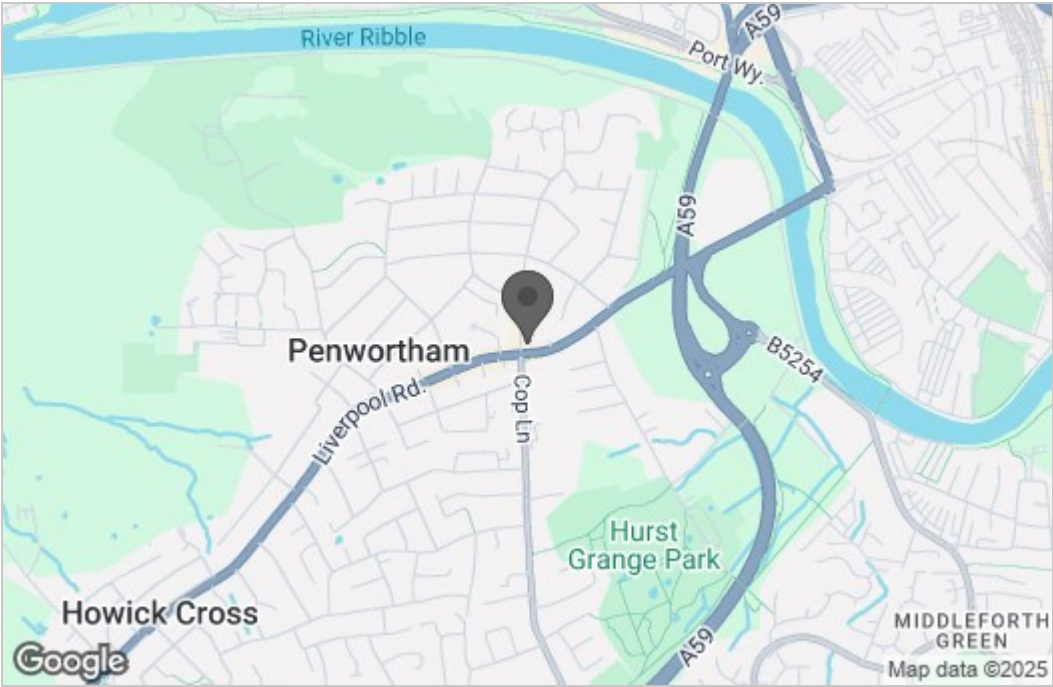
The property features two generously sized bedrooms, a well-maintained three-piece bathroom, and a bright, separate lounge perfect for relaxing or entertaining. The fitted kitchen provides ample storage and workspace, while the large central hallway is versatile enough to serve as a dedicated dining area or home office. This first-floor flat offers excellent proportions throughout and a practical layout ideal for a range of buyers. The flat is in good condition throughout and is offered with no chain.

Located on Liverpool Road, you'll enjoy easy access to local amenities, eateries, and transport links. This type of property is very rare, offering exceptional value in the incredibly popular location of Higher Penwortham. If you have any questions or would like to arrange a viewing, please get in touch.

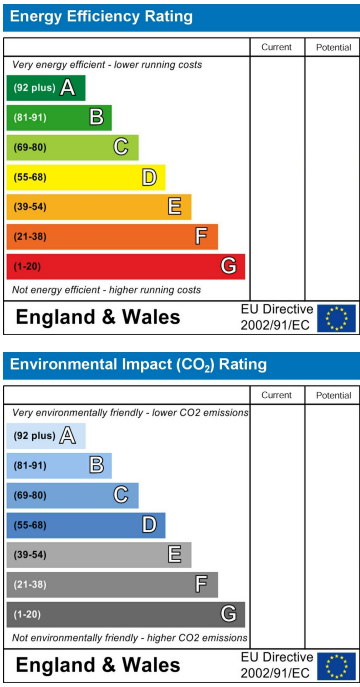
Floor Plan



Area Map



Energy Efficiency Graph



These particulars, whilst believed to be accurate are set out as a general outline only for guidance and do not constitute any part of an offer or contract. Intending purchasers should not rely on them as statements of representation of fact, but must satisfy themselves by inspection or otherwise as to their accuracy. No person in this firms employment has the authority to make or give any representation or warranty in respect of the property.